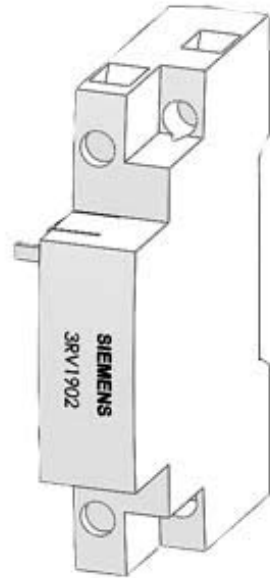


Shunt release 20...24 V AC, 50/60 Hz, 100% ON period 20-70 V AC, 50/60 Hz, 5 s ON period 20-70 V DC, 5 s ON period for circuit breaker Size S00...S3 !!! Phased-out product !!! Successor is SIRIUS 3RV2 Preferred successor type is >>3RV2902-1DB0<<



| General technical data   |                       |
|--|-----------------------|
| Product brand name   | SIRIUS                |
| Product designation  | shunt release         |
| Size of the circuit-breaker  | S00, S0, S2, S3       |
| Suitability for use  | motor circuit breaker |
| Protection class IP on the front   | IP20                  |
| Design of short-circuit protection   | fuse                  |
| Degree of pollution  | 3                     |
| Insulation voltage rated value   | 690 V                 |
| Insulation voltage with degree of pollution 3 rated value                        | 690 V                 |
| Ambient temperature  |                       |
| • during storage   | -50 ... +80 °C        |
| • during operation   | -20 ... +60 °C        |
| Reference code acc. to DIN 40719 extended according to IEC 204-2 acc. to IEC 750 | F                     |
| Reference code acc. to DIN EN 61346-2  | F                     |

Auxiliary circuit

|  |   |
|--|---|
| Number of NC contacts for auxiliary contacts instantaneous contact | 0 |
| Number of NO contacts for auxiliary contacts instantaneous contact | 0 |
| Number of NO contacts for auxiliary contacts leading contact       | 0 |
| Number of CO contacts of auxiliary contacts instantaneous contact  | 0 |

**Control circuit/ Control**

|  |       |
|--|-------|
| <b>Type of voltage of the control supply voltage</b> | AC    |
| <b>Control supply voltage frequency</b>              |       |
| • 1  |       |
| — Initial rated value                                | 50 Hz |
| — Final rated value                                  | 60 Hz |
| <b>Control supply voltage</b>                        |       |
| • 1  |       |
| — at AC  |       |
| — at 50 Hz Initial rated value                       | 20 V  |
| — at 50 Hz Final rated value                         | 24 V  |
| — at 60 Hz Final rated value                         | 24 V  |
| — at 60 Hz Initial rated value                       | 20 V  |

**Installation/ mounting/ dimensions**

|                      |                  |
|----------------------|------------------|
| <b>Mounting type</b> | snap-on mounting |
| <b>Width</b>         | 18.5 mm          |
| <b>Height</b>        | 90 mm            |
| <b>Depth</b>         | 68 mm            |

**Certificates/approvals**

|                                   |               |
|-----------------------------------|---------------|
| <b>Certificate of suitability</b> | CE / UL / CSA |
|-----------------------------------|---------------|

|                                 |                          |                          |
|---------------------------------|--------------------------|--------------------------|
| <b>General Product Approval</b> | <b>Test Certificates</b> | <b>Shipping Approval</b> |
|---------------------------------|--------------------------|--------------------------|



[Type Test Certificates/Test Report](#)



|                          |              |
|--------------------------|--------------|
| <b>Shipping Approval</b> | <b>other</b> |
|--------------------------|--------------|



[Confirmation](#)



## Further information

**Information- and Downloadcenter (Catalogs, Brochures,...)**

<http://www.siemens.com/industrial-controls/catalogs>

**Industry Mall (Online ordering system)**

<https://mall.industry.siemens.com/mall/en/en/Catalog/product?mfb=3RV1902-1DB0>

**Cax online generator**

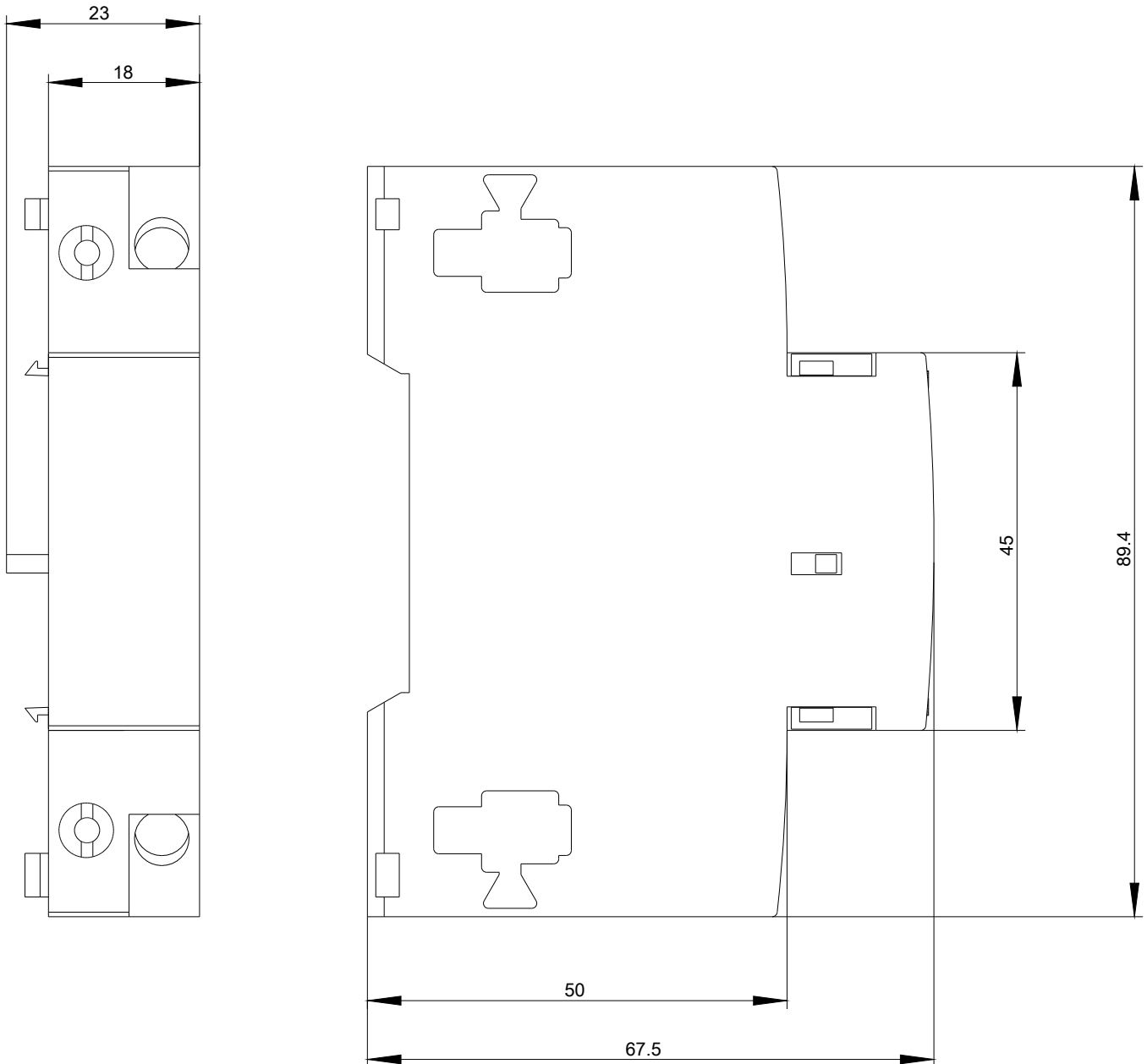
<http://support.automation.siemens.com/WW/CAXorder/default.aspx?lang=en&mfb=3RV1902-1DB0>

**Service&Support (Manuals, Certificates, Characteristics, FAQs,...)**

<https://support.industry.siemens.com/cs/ww/en/ps/3RV1902-1DB0>

**Image database (product images, 2D dimension drawings, 3D models, device circuit diagrams, EPLAN macros, ...)**

[http://www.automation.siemens.com/bilddb/cax\\_de.aspx?mfb=3RV1902-1DB0&lang=en](http://www.automation.siemens.com/bilddb/cax_de.aspx?mfb=3RV1902-1DB0&lang=en)



last modified:

01/08/2020