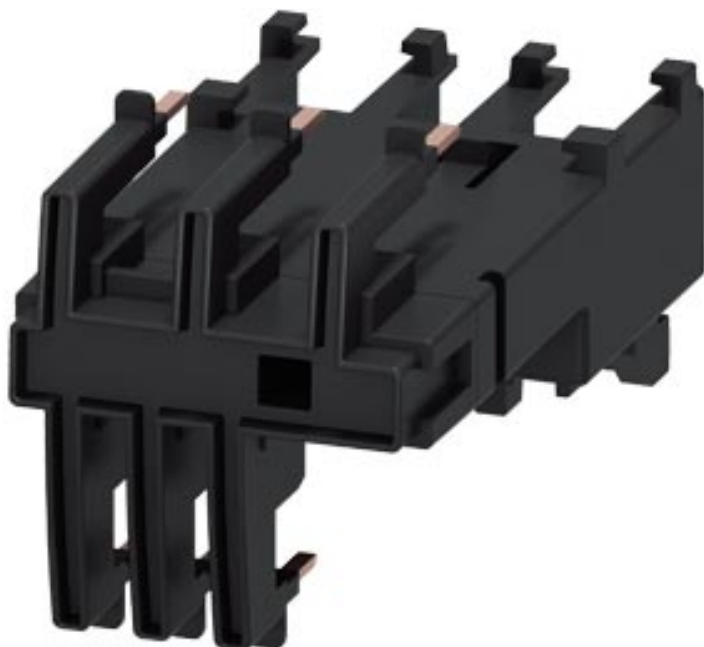






Link module Electrical and mechanical for 3RV2011 and 3RT201. Spring-type terminal (multi-unit packaging)



General technical data		
Product brand name		SIRIUS
Product designation		link module
Design of the product		actuating voltage contactor: AC and DC
Size of the circuit-breaker		S00
Size of contactor		S00
Installation/ mounting/ dimensions		
Mounting type		clip-on
Certificates/approvals		

General Product Approval			Declaration of Conformity		Test Certificates
 CSA	 UL		 EG-Konf.	<a href="#">Miscellaneous</a>	<a href="#">Special Test Certificate</a>

Test Certificates	Shipping Approval				other
<a href="#">Type Test Certificates/Test Report</a>	 ABS	 BUREAU VERITAS	 PRS	 RINA	<a href="#">Confirmation</a>

#### Further information

##### Information- and Downloadcenter (Catalogs, Brochures,...)

<http://www.siemens.com/industrial-controls/catalogs>

##### Industry Mall (Online ordering system)

<https://mall.industry.siemens.com/mall/en/en/Catalog/product?mlfb=3RA2911-2A>

##### Cax online generator

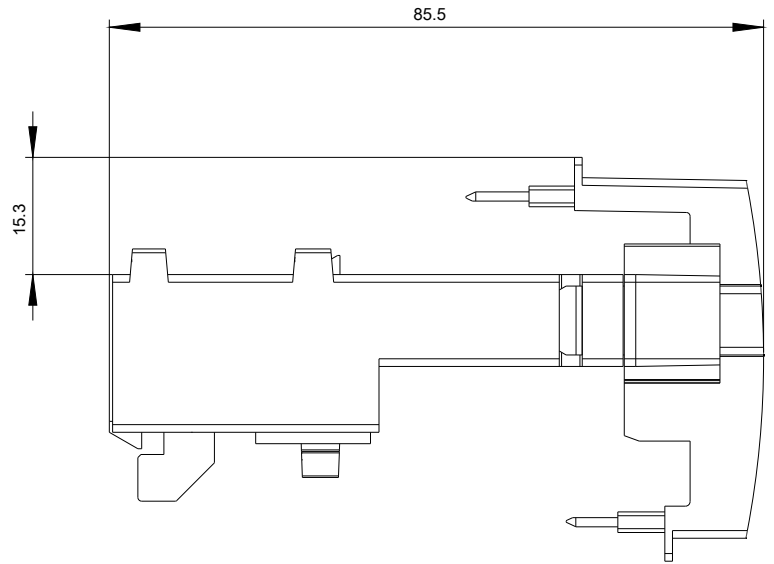
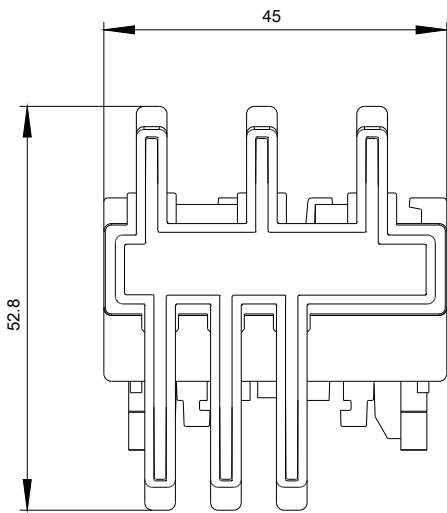
<http://support.automation.siemens.com/WW/CAXorder/default.aspx?lang=en&mlfb=3RA2911-2A>

##### Service&Support (Manuals, Certificates, Characteristics, FAQs,...)

<https://support.industry.siemens.com/cs/ww/en/ps/3RA2911-2A>

##### Image database (product images, 2D dimension drawings, 3D models, device circuit diagrams, EPLAN macros, ...)

[http://www.automation.siemens.com/bilddb/cax\\_de.aspx?mlfb=3RA2911-2A&lang=en](http://www.automation.siemens.com/bilddb/cax_de.aspx?mlfb=3RA2911-2A&lang=en)



last modified:

01/08/2020