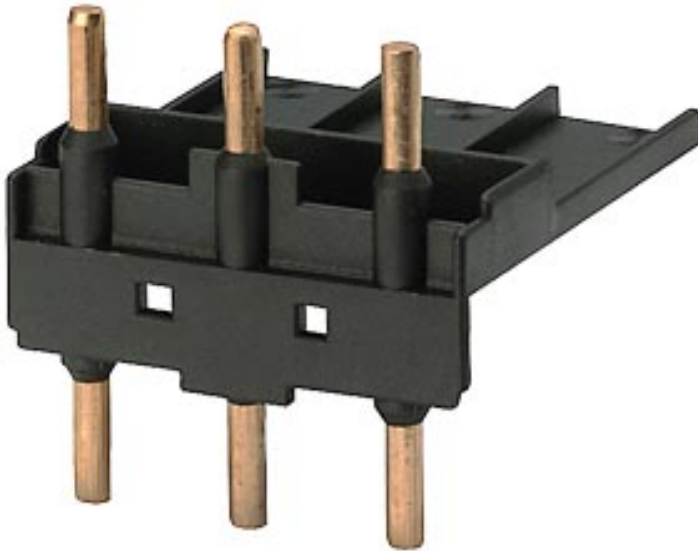


Link module Electrical and mechanical For 3RV1.31/3RT1.3, 3RW3 AC operation (multi-unit packaging) !!! Phased-out product !!! Successor is SIRIUS 3RA2 Preferred successor type is >>3RA2931-1A<<



### General technical data

Product brand name	SIRIUS
Product designation	link module
Design of the product	for 3RT1.3 and 3RW3
Size of contactor	S2

### Certificates/approvals

#### General Product Approval



EG-Konf.

#### Declaration of Conformity

[Miscellaneous](#)

#### Shipping Approval



#### other

[Confirmation](#)

## Further information

### **Information- and Downloadcenter (Catalogs, Brochures,...)**

<http://www.siemens.com/industrial-controls/catalogs>

### **Industry Mall (Online ordering system)**

<https://mall.industry.siemens.com/mall/en/en/Catalog/product?mlfb=3RA1931-1A>

### **Cax online generator**

<http://support.automation.siemens.com/WW/CAXorder/default.aspx?lang=en&mlfb=3RA1931-1A>

### **Service&Support (Manuals, Certificates, Characteristics, FAQs,...)**

<https://support.industry.siemens.com/cs/ww/en/ps/3RA1931-1A>

### **Image database (product images, 2D dimension drawings, 3D models, device circuit diagrams, EPLAN macros, ...)**

[http://www.automation.siemens.com/bilddb/cax\\_de.aspx?mlfb=3RA1931-1A&lang=en](http://www.automation.siemens.com/bilddb/cax_de.aspx?mlfb=3RA1931-1A&lang=en)

last modified:

01/08/2020